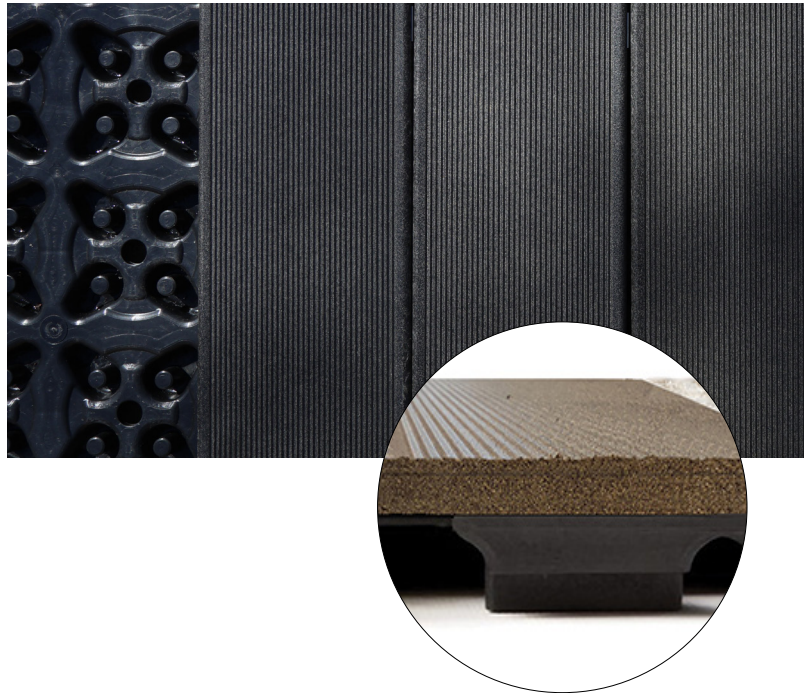


Dbase WPC



Roofinggreen® Dbase WPC is a patented modular support system for wood-effect WPC flooring, with a total thickness of just 2.7cm, which integrates perfectly with Roofinggreen® modular artificial grass flooring solutions.

The Dbase system revolutionizes the traditional installation method of composite wood decking.

The low-thickness draining base allows for uniform distribution of loads and therefore allows the use of boards of just 10mm thickness. The draining base is a universal chassis on which to lay WPC boards, porcelain stoneware tiles, terrazzo tiles or outdoor rugs, creating integrated multi-surface outdoor spaces.

The range of Roofinggreen® modular solutions is enriched with another alternative beyond artificial grass, offering new compositional possibilities for outdoor spaces, optimizing their construction and reducing total cost and environmental impact.

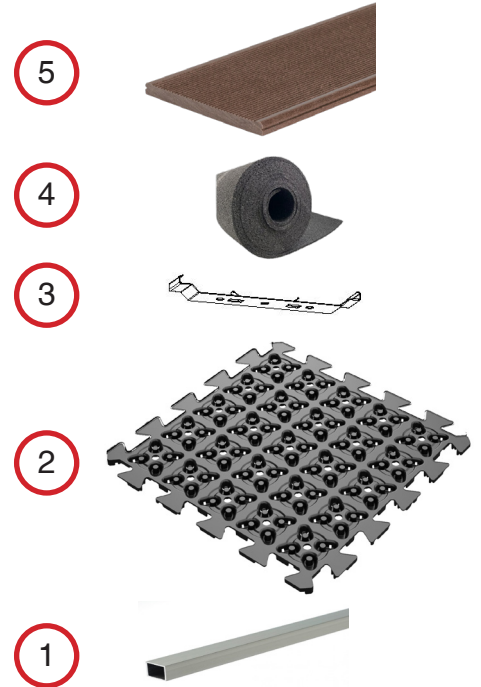
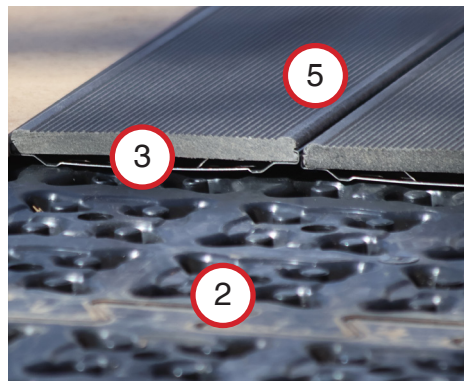
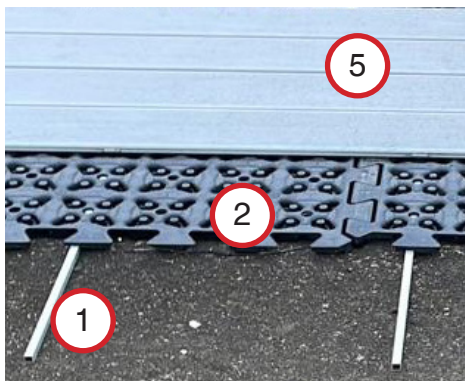
Key Features

- Low system height
- Coplanarity with other Roofinggreen systems
- Excellent drainage
- Reduced weight
- High compressive strength
- Efficient installation process
- Recyclable materials
- Reduced environmental impact



Dbase WPC SYSTEM COMPOSITION

- 1) reinforcement bars
- 2) Dbase draining bases
- 3) clips and screws
- 4) noise reduction rubber band
- 5) WPC boards



MATERIAL SPECIFICATIONS

1) Reinforcement bars

<i>Material</i>	anodised aluminum
<i>Dimensions</i>	10 x 10 x 2000 mm
<i>Weight</i>	0,09 kg/m(± 10%)
<i>Quantity</i>	3,2 m/m2

2) Dbase module

<i>Material</i>	polypropylene (PP)
<i>Dimensions</i>	500 x 500 x 15 mm (± 2 mm)
<i>Weight</i>	3,6 kg/ m2 (± 10%)
<i>Quantity</i>	4 pcs/m2

3) Clips

<i>Material</i>	stainless steel
<i>Dimensions</i>	122 x 20 x 10 mm
<i>Quantity</i>	21 pcs/m2

Screws

<i>Material</i>	stainless steel
<i>Dimensions</i>	4,2 x 13 mm
<i>Quantity</i>	42 pcs/m2



4) Noise reduction self-adhesive rubber and

<i>Material</i>	recycled rubber granules agglomerated with polyurethane elastomers
<i>Dimensions</i>	80 x 3 mm, rolls of 29m
<i>Weight</i>	1,5 kg/ m2 (± 10%)
<i>Quantity</i>	8,33 m/ m2

5) WPC boards

<i>Material</i>	Composite wood (WPC), a mixture of HDPE (high-density polyethylene) and wood flour, including anti-UV, anti-fungus and anti-algae additives.
-----------------	--

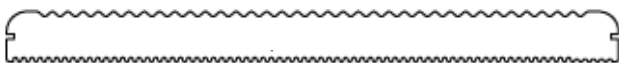
<i>Dimensions</i>	120 (± 0,5) x 10 (± 0,3) x 2000 (± 2) mm
<i>Weight</i>	1,3 kg /m
<i>Quantity</i>	8,33 m/m2

INSTALLED SYSTEM

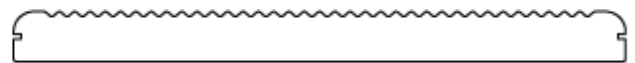
<i>Total height</i>	27 mm
<i>Total weight</i>	18 kg/m2 (± 10%)

SURFACE TEXTURES

SIDE A: WAVE

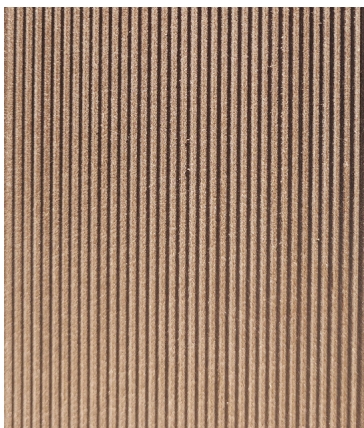


SIDE A: WAVE



standard SIDE B: BRUSHED

on request SIDE B: WOOD



WAVE

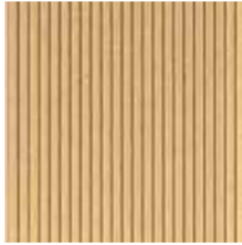


BRUSHED



WOOD

COLOURS *



MAPLE



CEDAR



OAK



TOBACCO

*Additional colors available on request

TECHNICAL PERFORMANCE

<i>Parameter</i>	<i>Value</i>
<i>Permissible distributed load</i>	5.0 kN/m ²
<i>Temperature range</i>	from -20°C to 75°C
<i>BRINELL Penetration Resistance</i>	7 kg/mm ² UNI EN 1534/2010

For further technical specifications regarding the WPC flooring surface, please refer to the technical data sheet of the boards used.

Roofinggreen panels can be used all year round and in a variety of climatic conditions (hot, cold, rain, snow), thanks to their high dimensional stability, non-absorption of rainwater.

The buyer is responsible for identifying, verifying and communicating to Roofinggreen the relevant local and national legislation, standards, regulations and operating instructions.

PROJECT ASSISTANCE

To ensure the correct amount of material needed, it is recommended to share with Roofinggreen Srl the surfaces dimensions (in .dwg or .pdf format) of the involved areas.

INSTALLATION

Dbase panels are designed to be installed directly on waterproof surfaces, appropriately sloped for rainwater flow, without a support system. Under certain conditions it is recommended to place first a layer of the Geodreno geocomposite drainage mat: this helps to protect the underlying surface (for example: waterproof PV sheath), to create a smooth and homogeneous installation surface, and to increase horizontal water drainage.

Dbase panels can be cut to size on-site, using a circular table saw or other similar suitable equipment, to obtain smooth perimeter edges and to adapt the panels to the necessary surface geometry. For detailed installation instruction, see the Installation Guide and corresponding videos.

FURNITURE INSTALLATION

After product installation and WPC treatment with the impregnating agent, it is good practice to WAIT TWO WEEKS before placing any objects (furniture, planters) on the surface, so that the color of the boards stabilises uniformly over the entire surface.

COLOUR VARIATION AND STAINABILITY

Wood-based products are subject to slight colour variations from batch to batch of production. It is therefore recommended to purchase all the boards needed for project installation from a single batch and, when appropriate, add some excess boards for subsequent repairs or replacements. In such a scenario, the installed reserve boards will initially have a more vivid colour tone, but within a few months they will reach a similar shade to the previously installed boards. Following installation, the WPC flooring is subject to a gradual variation of the initial color tone. The wood component may generate the appearance of halos caused by water of natural origin (atmospheric agents), a phenomenon that varies depending on the frequency and quantity of water. These variations in color and surface appearance do not affect the physical-mechanical properties of the system, and do therefore not constitute a defect or lack of conformity.

The appearance of halos can also occur following prolonged contact with organic or polluting substances and is more evident on light-colored floor boards. In order to safeguard the product, it is advisable, depending on the intensity and origin of these substances, to promptly remove the halos that have appeared, if necessary using a light metal brush, in order to avoid permanent absorption of the same: in most cases and in particular during the first months after installation, frequent rinsing or heavy rainfall may be sufficient to solve the problem.

After the restoration operation, the treated area will initially appear lighter, then, over time, it will return to its original color and become uniform with the rest of the flooring.

It is good practice, before proceeding with brushing operations, to carry out a test on a sample or on the back of the product itself, in order to evaluate its effects and results.



CLEANING AND PROTECTION

CLEANER

Specific detergent for WPC for surface and intensive cleaning. To be used diluted in water for ordinary cleaning. In case of more pronounced stains, higher concentrations may be used up to the use of the pure product, always making sure not to leave the product in contact for too long.

SPRAY CLEANER

Spray cleaner for WPC, suitable for removing more marked stains. Spray directly on the stain, leave to act for a few minutes, brush and rinse thoroughly.

WPC PROTECTIVE IMPREGNATING AGENT

Treatment formulated with nano-technological particles specifically for WPC. Slows down the absorption of dirt and/or oily substances, and allows easier removal of any stains even after a few hours. However, it is always necessary to remove the stains, as the product is not water and oil repellent, the protective coating simply allows more time for removal. Periodic application with a brush - approx. yield 1lt/7-8 m², considering two coats.

WARNINGS: : following installation of WPC products, it is always recommended to apply a protective impregnation coating to preserve the aesthetic appearance of the surface.

All rights reserved. Reproduction of texts, drawings, photos and illustrations without authorization from Roofinggreen is prohibited. The color images are purely indicative and may not correspond to the shade of the products. Roofinggreen S.r.l. reserves the right to change, modify or eliminate products from this sheet without notice.

© **Copyright Roofinggreen S.r.l.**

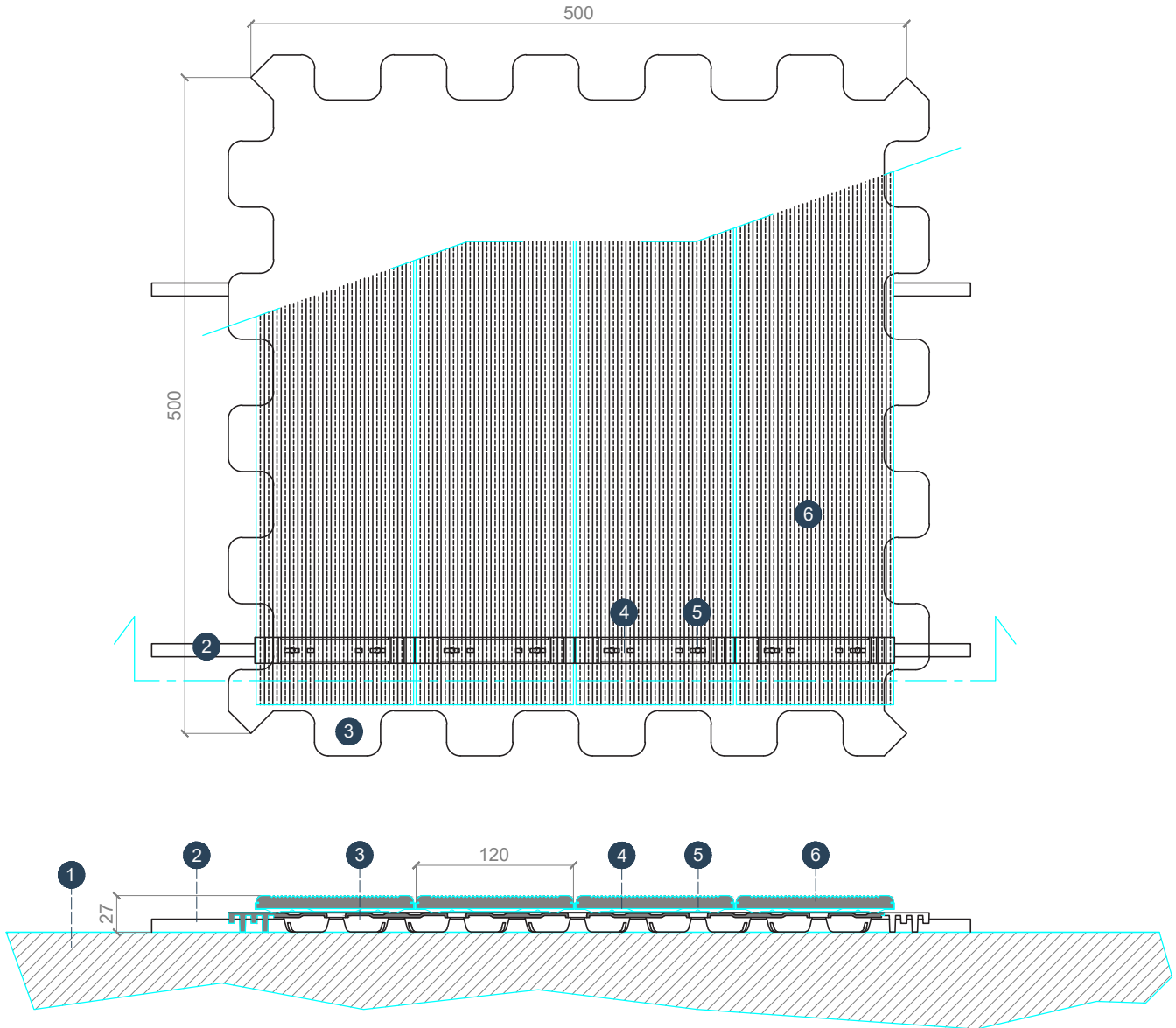
Roofinggreen Srl

Galleria San Federico, 16

10144 Torino – Italy

T: +39 011 0714037

www.roofinggreen.it – info@roofinggreen.it



LEGEND:

- ① Screed
- ② Stiffening bar 10x10x2000 mm
- ③ Roofinggreen **Dbase** sp. 15 mm
- ④ Stainless steel clip
- ⑤ Stainless steel screw
- ⑥ WPC decking board 120x10x2000 mm

MODEL	FILE	DESCRIPTION	SCALE	TAV.
D BASE WPC	DBASE_WPC.dwg	Plan and Section	1:5	DBASE_01

INDICATIVE DRAWING. All rights reserved. The reproduction of texts, drawings, photos and illustrations is strictly forbidden without permission of Roofinggreen Srl. Photographic images are indicative and may not correspond to the exact colour of the products. Roofinggreen Srl reserves the right to change, modify or delete products without prior notice.